

## Multitrend Plus V5 Electronic Data Recorder

09/2003  
Page 1 of 13  
43-TV-03-02

## Specification

### Function

Honeywell's Multitrend Plus V5 recorder provides flexible, general-purpose electronic data recording in a 180mm-format size recorder. The recorder accepts up to 32 universal analog inputs and stores data on an integral, removable storage media. The customer has a number of storage media options available, including a dual storage capability. The data is displayed on a 12.1" color active matrix LCD that provides wide viewing angles along with bright easy to read displays. The operator interface provides easy access to the recorder menus for quick set up and replaying of the data. Data is stored under pen configurations, in secure files and since the data is directly related to a pen there is no need to remember file names and file structures.

An Ethernet port provides an interface from the recorder to a LAN or the Internet for advanced networking and remote monitoring of the recorder.

Other advanced features include; Fuzzy Logging, Custom Screen Design and advanced data security to meet 21CFR Part 11 compliance for electronic data recording. Data replay is easily accomplished using the intuitive thumbwheel and keypad.

The TrendManager Pro V5 Software Suite complements the capabilities of the recorders by providing the benefits of configuration, data analysis and data acquisition using a personal computer. It ties your process together, providing for real-time or FTP communications with the recorders through a Local Area Network (LAN) or the Internet. TrendManager Pro V5 Software Suite provides the tools for viewing real time data, data analysis, data archiving and configuration for the entire family of electronic data recorders.

### Features

- **12.1" Color Active Matrix Display** — makes it easy to interpret process data and take action with the easy to understand bar charts, digital values trends or the customized display.
- **Ethernet Connectivity** - with support for various protocols provides unlimited connectivity to local area networks (LANs) or the Internet.
- **Paperless Chart Recording** — eliminates the need for paper and pens with their associated cost and mess.



### Features, Continued

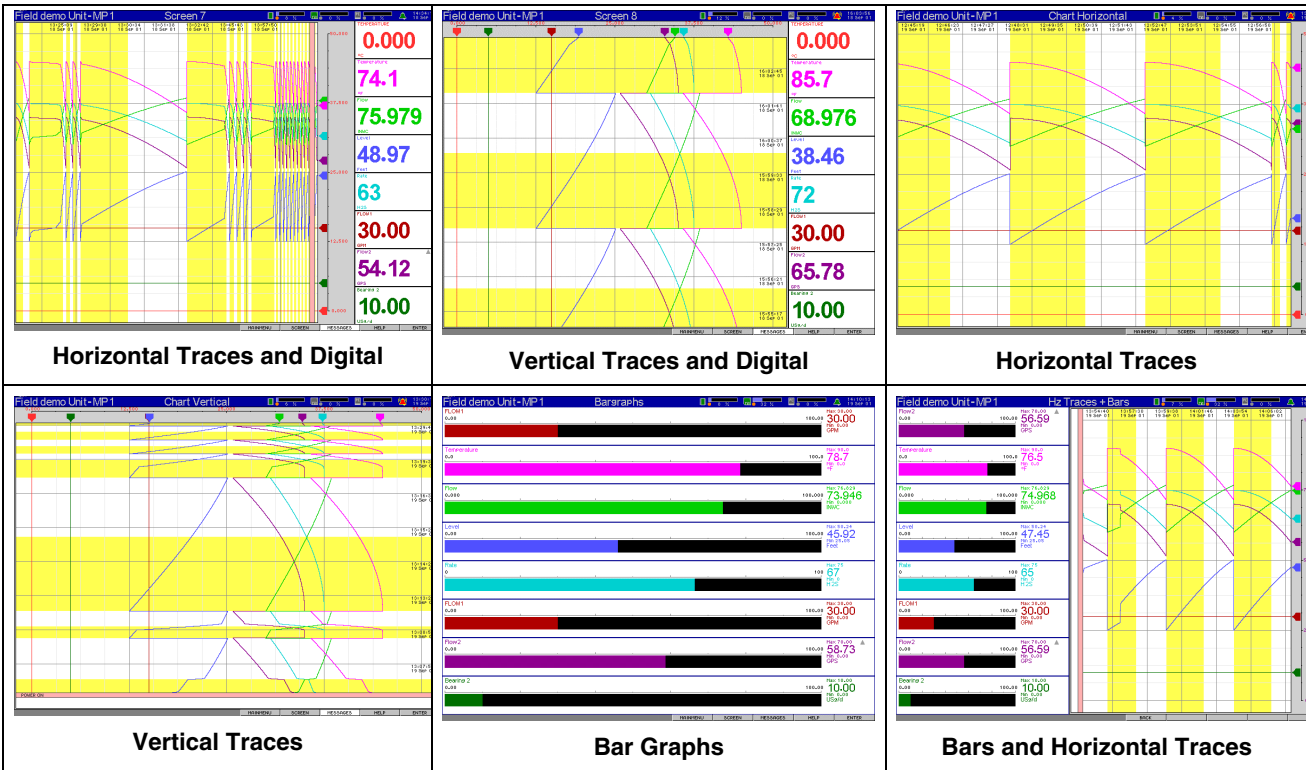
- **Up to 32 Analog Inputs** — up to thirty-two universal analog inputs available that can monitor process variables from a variety of sensors.
- **Data Storage** — A number of data storage options are available; these include a 1.44MB floppy, 100MB ZIP Drive or PCMCIA. In addition to this the recorder is capable of supporting dual redundant storage media for added security.
- **Standard Mounting** — fits standard cutout and allows for easy replacement of existing 180 mm paper chart recorders.
- **CE Mark** — Conformity with 73/23/EEC, Low Voltage Directive and 89/336/EEC EMC Directive.
- **Total Data Integrity** — data is stored in secure files based on pen designations making it easy to retrieve the data based on process information rather than having to remember file names.
- **Independent Display Chart Speeds and Logging rates** — logging rates can be programmed completely separate from the chart display speed, allowing the data to be displayed and stored at the rates that best suits the application.
- **Universal Power** — the instrument is designed to work from 90 Vac to 250 Vac.
- **Language Support** — Standard language prompts for English (US & UK), French, German, Italian, Portuguese (Braz), Spanish, Polish, Hungarian, Romanian, Slovakian Czechoslovakian and Turkish.

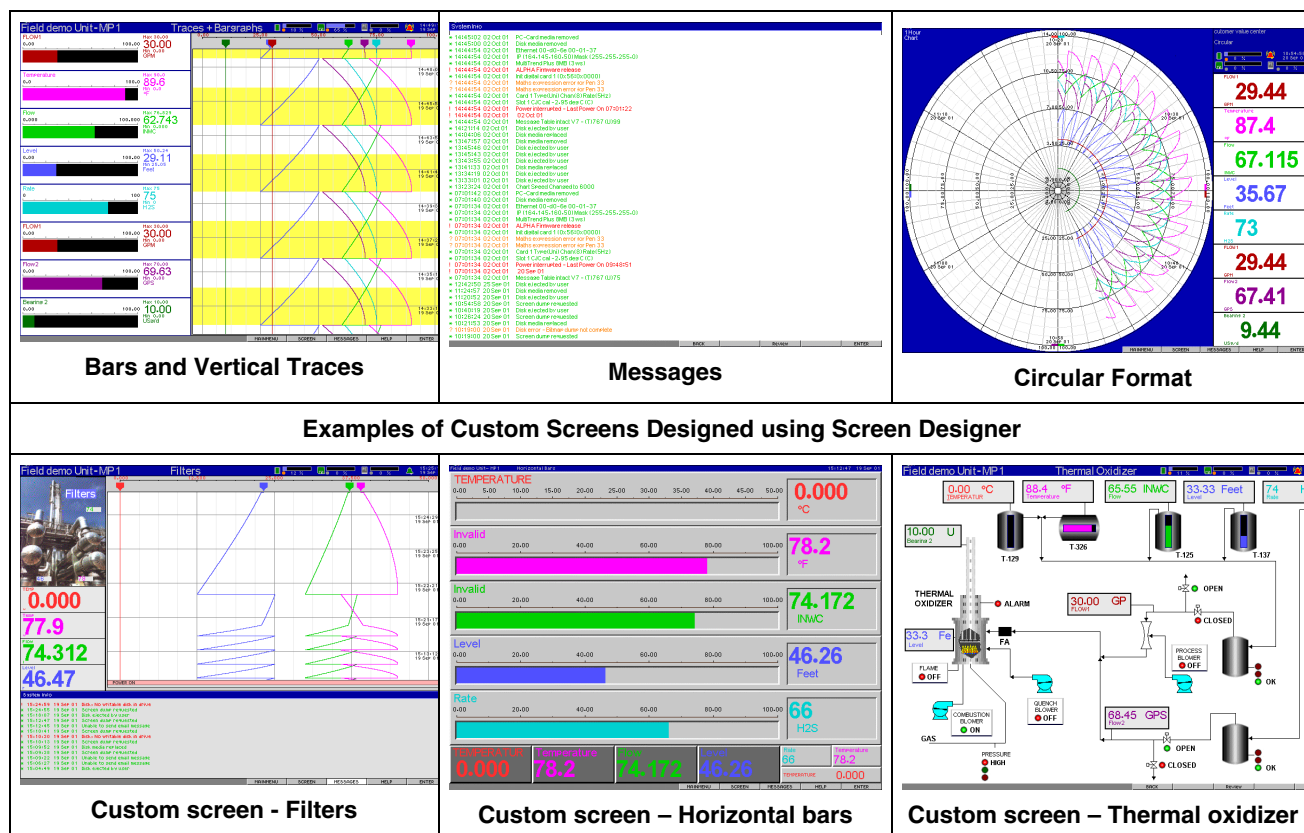
### Features, Continued

- **Real Time Clock** — provides accurate time stamping of logged data and events and is battery backed up to prevent a loss of the clock time/date
- **Large Memory Buffer** — 8Mbyte battery backed buffer helps protect data during routine operation.
- **Password Protection** — multiple levels of password protection provided to ensure compliance with 21CFR Part 11. Up to 4 levels of password protection with up to ten different passwords are available for use. The password can prevent unauthorized entry to the entire recorder configuration or just portions of the recorder configuration or operation.
- **Fuzzy Logging** — This standard feature provides a unique method to increase the storage capacity of the recorder. The data is monitored to determine changes in process data, if no changes are observed data is logged periodically. If data is changing rapidly, it is recorded normally at the programmed rate. By not logging data that is static, data compression of up to 100:1 or more can be observed, saving valuable disk space. The amount of disk space left is easily observed and can be set up as an alarm limit to provide notice when data could be lost.

| Options   | Options   | Trend Manager Pro V5<br>Software Suite   |
|---|---|--|
| <ul style="list-style-type: none"><li>• <b>Alarm Outputs</b> — up to thirty-two alarm outputs are easily set by users to announce selected out-of-limit conditions. Up to 16 SPDT relays are available or up to 32 discrete outputs (24Vdc, 1 Amp) are available to activate the user's external equipment.</li><li>• <b>Communications</b> — the recorder supports FTP, real time Trendbus, Modbus, web and e-mail over the Ethernet communications port. The recorder is also capable of Modbus RTU communications over an RS485 network. An RS232 port allows the use of an ASCII barcode reader to mark the chart or record batch specific data when used in conjunction with Event Markers.</li><li>• <b>Math</b> — A full function math package is available on the recorder. This feature can handle math expressions that can consist of expressions up to 250-characters in length.</li><li>• <b>24Vdc instrument power</b> — an optional 24Vdc instrument power is available for those applications requiring 24Vdc instrument power.</li></ul> | <ul style="list-style-type: none"><li>• <b>Digital Input</b> — a number of digital input options are available. The digital inputs allow users to initiate from a remote location through a dry contact closure, selected recorder functions, such as start/stop/reset totalization, mark the chart.</li><li>• <b>Event Markers/Actions</b> — provides an easy method for a user to mark an event or message on the electronic recorder. These messages are time stamped and can be up to 44 characters long. Additionally, certain recorder actions such as start/stop recording, digital inputs actions, user key presses, etc. can also be logged.</li><li>• <b>Extended Security Software</b> — an optional software function providing extended features including entry of unique User ID's and associated passwords, timeout of password entry, password expirations, and traceability by user.</li><li>• <b>Validation Documentation</b> — Honeywell can provide the additional documentation associated with using the recorder in a validated process.</li><li>• <b>100MB ZIP</b> — provides an alternative storage media</li></ul> | <ul style="list-style-type: none"><li>• <b>TrendViewer</b> — Standard software package for viewing, graphing, and printing stored data.</li><li>• <b>TrendManager Pro</b> — this is an advanced data analysis/archiving software package. It provides full configuration of the recorders along with e-mail set up. TrendManager Pro also allows files to be exported using comma separated variables (CSV) format.</li><li>• <b>TrendServer Pro</b> — is a fully network aware software package for communicating with the recorders. It supports all the capabilities of Trend Manager Pro plus FTP (file transfer protocol) and Web browser access. TrendServer Pro provides multi-level, multi-user access to the recorder data by various departments with security.</li><li>• <b>TrendServer Pro with Comms Server</b> — TrendServer Pro is available with a comms server to make it easier to interface third party HMI software packages that support an OPC Client.</li></ul> |

Standard Screens





## Specifications

| Design Attributes                       |  |
|---|--|
| <b>Digital Indication &amp; Display</b> | <p><i>Display Type:</i> Color LCD (TFT)</p> <p>Industrial grade with brightness adjustment and wide viewing angle</p> <p><i>Screen Size:</i> 12.1" diagonal</p> <p><i>Resolution:</i> SVGA (800 x 600 pixels)</p> <p><i>Screen Saver:</i> Set in minutes from 1 to 255 plus brightness adjustment</p> <p>Digital values displayed include alarms on bars, engineering units, pen name, events including tag, time &amp; date, 20-character description &amp; totalized values.</p>                   |
| <b>Display Update Rate</b>              | Display values updated every second.   |
| <b>Memory Status Display</b>            | A status bar, at the top of the recorder's screen, constantly displays real-time icons of memory % full and Disk % full. These percentages can be used and displayed by allocating a pen in a math expression.   |
| <b>Mimics &amp; Custom Screens</b>      | Provides the ability to import custom built screens and/or bit maps from the Screen Designer software.   |
| <b>Other Display Contents</b>           | <p>Fully programmable display values in engineering units. Time &amp; date stamp on every division, current time &amp; date, session number writing, writing, read only, recycling.</p> <p>Independent user-definable display screens and groups can be used to show a combination of pens, events, alarm summary and totalizer. Plant diagrams and mimics can be generated and then integrated into the recorder display in conjunction with traditional chart, bar graph and digital displays.</p> |
| <b>Analog Display Methods</b>           | <p><i>Horizontal:</i> Thick or thin traces, with or without bar, max/min markers, major &amp; minor divisions, time and date marked, name and description.</p> <p><i>Vertical:</i> Thick or thin traces, with or without bar, max/min markers, major &amp; minor divisions, time and date marked, name and description</p>   |
| <b>Message screen</b>                   | Displays system information and records any setup activity that has been changed. Provides warning and error message updates, lists alarm activity and places user defined marks on chart facility.  |

## Analog Display Colors

|                              |  |              |              |              |              |                    |        |                |
|------------------------------|--|--------------|--------------|--------------|--------------|--------------------|--------|----------------|
| <b>Analog Display Colors</b> | Pen #  | Color        | Pen #        | Color        | Pen #        | Color              | Pen #  | Color          |
|                              | Pen 1  | Red          | Pen 9        | Dark Blue    | Pen 17       | Purple             | Pen 25 | Sea Green      |
|                              | Pen 2  | Magenta      | Pen 10       | Blue/Green   | Pen 18       | Dark Navy          | Pen 26 | Maroon         |
|                              | Pen 3  | Green        | Pen 11       | Khaki        | Pen 19       | Forest             | Pen 27 | Violet         |
|                              | Pen 4  | Blue         | Pen 12       | Salmon       | Pen 20       | Taupe              | Pen 28 | Navy           |
|                              | Pen 5  | Cyan         | Pen 13       | Pink         | Pen 21       | Crimson            | Pen 29 | Fern           |
|                              | Pen 6  | Dark Red     | Pen 14       | Lime         | Pen 22       | Lilac              | Pen 30 | Olive          |
|                              | Pen 7  | Dark Purple  | Pen 15       | Light Blue   | Pen 23       | Mid Green          | Pen 31 | Bright Red     |
|                              | Pen 8  | Dark Green   | Pen 16       | Turquoise    | Pen 24       | Navy               | Pen 32 | Bright Magenta |
| <b>Data Storage</b>          | <p><b>Removable Media:</b> 3.5" 1.44Mbyte floppy, 100MB ZIP or PCMCIA memory interface card. The PCMCIA interface accepts ATA Type I, Type II or Type III PCMCIA cards with a capacity of 8Mbytes to 256Mbyte flash card, up to 1.2Gbyte hard disk</p> <p>Supports dual storage media – 1.44Mbyte floppy and PCMCIA interface or 100MB ZIP and PCMCIA interface (requires extra pens for setting up dual data storage)</p> <p><b>Internal Data Buffer:</b> 8MByte battery backed up RAM data buffer, rechargeable battery designed to retain data approximately 3 weeks if fully charged</p> <p><b>Setup:</b> Stored internally on EEPROM</p> <p><b>Manual Saving:</b> Data saving by inserting external floppy disk or PC card memory</p> <p><b>Data Saving Period:</b> Related to log rate, number of pens, total events and alarms. Each pen is capable of its own independent storage rate.</p> <p><b>Data Format:</b> Honeywell binary encoded format</p> <p><b>Recycling Mode:</b> 8Mbyte internal memory has full data recycle capability where the newest data overwrites the oldest data.</p> |              |              |              |              |                    |        |                |
|                              | Set for Sample Storage   |              | Time         |              |              |                    |        |                |
|                              | Channels   | 1 Sec        | 10 Sec       | 30sec        | 1 Min        | Media Type         |        |                |
|                              | 2  | 4D 3H 23M    | 41D 7H 49M   | 123D 23H 27M | 247D 22H 45M | 1.44 MB            |        |                |
|                              |  | 287D 23H 38M | 7Y 324D 19H  | 23Y 244D 8H  | 47Y 123D 7H  | 100MB PCMCIA / ZIP |        |                |
|                              | 4  | 2D 1H 41M    | 20D 15H 54M  | 61D 23H 43M  | 123D 23H 22M | 1.44 MB            |        |                |
|                              |  | 143D 23H 53M | 3Y 344D 21H  | 11Y 304D 16H | 23Y 244D 3H  | 100MB PCMCIA / ZIP |        |                |
|                              | 8  | 1D 0H 49M    | 10D 7H 57M   | 30D 23H 51M  | 61D 23H 41M  | 1.44 MB            |        |                |
|                              |  | 71D 23H 55M  | 1Y 354D 22H  | 5Y 344D 20H  | 11Y 304D 13H | 100MB PCMCIA / ZIP |        |                |
|                              | 12   | 0D 16H 31M   | 6D 21H 18M   | 20D 15H 54M  | 41D 7H 47M   | 1.44 MB            |        |                |
|                              |  | 47D 23H 56M  | 1Y 114D 23H  | 3Y 34D 21H   | 7Y 324D 17H  | 100MB PCMCIA / ZIP |        |                |
|                              | 16   | 0D 12H 23M   | 5D 3H 58M    | 15D 11H 55M  | 30D 23H 50M  | 1.44 MB            |        |                |
|                              |  | 35D 23H 57M  | 359D 23H 29M | 2Y 349D 22H  | 5Y 334D 18H  | 100MB PCMCIA / ZIP |        |                |
|                              | 32   | 0D 6H 11M    | 2D 1H 59M    | 7D 17H 57M   | 15D 11H 55M  | 1.44 MB            |        |                |
|                              |  | 17D 23H 58M  | 179D 23H 44M | 1Y 174D 23H  | 2Y 349D 22H  | 100MB PCMCIA / ZIP |        |                |
| <b>Power Requirements</b>    | <p>Voltage (VRMS): 90 Vac to 250 Vac (auto select). Frequency: 50/60 Hz,</p> <p>Power Consumption &lt;50 VA. Optional instrument power ,</p> <p><b>Voltage:</b> 24 Vdc ± 6Vdc. <b>Power Consumption:</b> &lt; 50 watts</p>   |              |              |              |              |                    |        |                |
| <b>Password Protection</b>   | <p>Four levels of Password protection are provided – Engineer, Supervisor, Technician, and Operator. Password protection restricts user entry to the recorder set up and specific screens.</p> <ul style="list-style-type: none"> <li>Engineer - Highest access to all levels, Supervisor, Technician and Operator.</li> <li>Supervisor - 2nd highest level including Technician and Operator access</li> <li>Technician - 3rd level including Operator access</li> <li>Operator - 4th and lowest level of access.</li> </ul>  |              |              |              |              |                    |        |                |
| <b>Clock</b>                 | <p>Calendar function, daylight savings time adjustable manually or with communications</p> <p>The time can be adjusted and synchronized using Ethernet scheduler</p> <p>Tolerance: ±20ppm to a resolution of 1 second</p> <p>Battery backed up, Lithium battery - 10 years life (powered)</p>  |              |              |              |              |                    |        |                |
| <b>Languages</b>             | English UK, English US, French, German, Italian, Portuguese (Brazilian), Spanish, Polish, Hungarian, Turkish, Romanian, Slovakian, Czechoslovakian.  |              |              |              |              |                    |        |                |
| <b>Temperature units</b>     | °C, °F or K (Kelvin)   |              |              |              |              |                    |        |                |
| <b>Recorder ID</b>           | Recorder name, Screen name, Time and Date displayed at all times.  |              |              |              |              |                    |        |                |
| <b>Alarm Set Points</b>      | Up to 64 integral "soft" alarm set points easily set by user to announce selected out of limit conditions. Alarm Set points defined in Trend Manager Pro V5 Software Suite   |              |              |              |              |                    |        |                |
| <b>Events List</b>           | Enabling the user to review events logged, activate date option, filter screen to display specific events e.g. alarm activity only. Reset option available.  |              |              |              |              |                    |        |                |
| <b>Data Replay Mode</b>      | Data replay facility on chart displays at normal, fast or slow speeds. Data is replayed from the buffer with the buffered time available for replay dependant on chart speed.  |              |              |              |              |                    |        |                |

| Specifications  |   |
|---|---|
| <b>Chart Speeds:</b>  | 1 mm/hour, 5 mm/hour, 10 mm/hour, 20 mm/hour, 30 mm/hour, 60 mm/hour, 120 mm/hour, 600 mm/hour, 1200 mm/hour, 6000 mm/hour, 12000 mm/hour<br>Chart speeds can be set independently for each chart and is independent of logging rate<br>First channel in Screen Layout determines the display chart speed   |
| <b>CE Conformity</b>  | This product is in conformity with the protection requirements of the following European Council Directives: <b>73/23/EEC</b> , the Low Voltage Directive, and <b>89/336/EEC</b> , the EMC Directive. Conformity of this product with any other "CE Mark" Directive(s) shall not be assumed.  |
| <i>Immunity</i>   | Complies with EN50082-2   |
| <i>Product Classification</i>   | Class I: Cord Connected, Panel Mounted Industrial Control Equipment with protective earthing (grounding). (EN 61010-1)  |
| <i>Enclosure Rating</i>   | Front panel designed to IP 65 (IEC 529), Splash proof cover designed to IP65/NEMA 4   |
| <i>Installation Category (Over-voltage Category)</i>                    | Category II: (EN 61010-1)   |
| <i>Emissions</i>  | Complies with EN50081-1 (Ref. IEC 664-1)  |
| <i>EMC Classification</i>   | Group 1, Class A, ISM Equipment (EN 55011, emissions), Industrial Equipment (EN 61326, immunity)  |
| <i>Safety</i>   | Complies with EN61010-1: 1993. Panel Mounted Equipment, Terminals must be enclosed within the panel.  |
| <i>Disturbances</i>   | Complies with EN605555-2, EN60555-3   |
| Seismic Qualification   | Complies with IEEE 344-75 (optional)  |
| Analog Inputs   |   |
| <b>Number of Inputs</b>   | 8, 12, 16, 24 or 32 input channels  |
| <b>Input Types</b>  | EMF (mV, V, mA) Thermocouple, RTD   |
| <b>PT100/200Ω RTD Inputs<br/>Ni 100/120Ω RTD Inputs<br/>Cu 10/Cu 53</b> | The universal input card will access and work with all RTD, T/C and Linear input signals. The Fast Scan Input card does not accept Cu 10/CU53 Inputs and if set to RTD or T/C ranges the scan rate is 200ms or 500ms.   |
| <b>Minimum Input Span</b>   | Range is fully configurable with span limitation of the operating range selected with 4% under range to 4% over range capability  |
| <b>Input Resolution</b>   | 0.0015 % (16 Bit ADC)   |
| <b>Input Impedance</b>  | Current loop resistance dc: 10 ohms ±5%, all other: >1 MΩ   |
| <b>Source Impedance</b>   | RTD: 40 ohms per lead maximum, 0.1 °C/Ω, T/C 1000• max., 0.5°C/100•   |
| <b>Square Root Extraction</b>   | Scaling limits: ±1,000,000. Decimal point: User selectable<br>Engineering units: user definable, up to 12 characters  |
| <b>Input Sampling Rate</b>  | Recorder has 4 available slots of 8 analog inputs each, the input sampling rate is dependent on actuation type. The sample rate for each input can be set independently by channel and slot, to achieve 20ms sampling all inputs for that slot must be set to linear inputs (mV, mA, V)<br>(20msec scanning must be selected as the Fast Scanning option) |
|   | Linear only (Fast Scan Card) 20 ms (50 Hz), 200 ms (5 Hz), 500 ms (2 Hz)  |
|   | Thermocouple/RTD (Fast Scan Card) 200 ms (5 Hz), 500 ms (2 Hz)  |
|   | Universal Card 500 ms (2Hz)   |
| <b>Input Filter</b>   | Single Low pass filter software adjustable from 1 to 15 seconds   |
| <b>Linear Input Scaling</b>   | -999999 to 999999, scale factor of 1 to 9999. Decimal Point automatic or programmable<br>Engineering units, user definable (5 characters)   |
| <b>Input Isolation</b>  | Fast Scan Card -100 Vdc channel-to-channel, channel-to-ground.<br>Universal Card – 400 Vdc channel to channel, channel to ground  |
| <b>Noise Rejection</b>  | Universal Card - Series mode > 60db, Common mode > 130db @ 120Vac   |
| <b>Input Sampling Method</b>  | Method: Sample, Average, Min-Max  |
| <b>Dielectric Strength</b>  | Power supply to ground terminal: 1350 Vac (50/60 Hz), < 1minute   |
| <b>Insulation Resistance</b>  | >9.9 MΩ Each terminal to ground terminal  |

## Specifications

| Performance                         |  |  |                 |               |   |
|-------------------------------------|--|--|-----------------|---------------|---|
| Accuracy - Fast Scanning Input Card |  |  |                 |               |   |
| Input Actuation<br>(Linear)         | Range  |  | Ref. Accuracy   |               | Temp. Stability ±   |
| Millivolts dc                       | -100 to 100  |  | ±0.1%           |               | 0.01%/°C  |
| Volts dc                            | -200 to 200  |  | ±0.1%           |               | 0.01%/°C  |
| Milliamps **                        | -1.0 to 1.0  |  | ±0.1%           |               | 0.01%/°C  |
|                                     | -10 to 10  |  | ±0.1%           |               | 0.01%/°C  |
|                                     | -10 to 10  |  | ±0.2%           |               | 0.01%/°C  |
|                                     | -20 to 20  |  | ±0.2%           |               | 0.01%/°C  |
| Input Actuation<br>(Thermocouples)  | Range  |  | Ref. Accuracy * |               | Temp.<br>Stability ±<br>Degrees Error<br>Per 1 Degree<br>ΔT |
|                                     | °F   | °C   | ± °F            | ± °C          |   |
| C(W5)                               | 32 to 4172   | 0 to 2300  | 10.35           | 5.75          | 0.06%/°C  |
| E                                   | -328 to 1832<br>-328 to 32<br>32 to 1832                 | -200 to 1000<br>-200 to 0<br>0 to 1000                 | 10.8<br>5.4     | 6<br>3        | 0.06%/°C  |
| J                                   | -328 to 2174<br>-328 to 32<br>32 to 2174                 | -200 to 1190<br>-200 to 0<br>0 to 1190                 | 8<br>4          | 4.5<br>2.3    | 0.03%/°C<br>0.03%/°C  |
| K                                   | -328 to 2462<br>-328 to 32<br>32 to 1832<br>1832 to 2462 | -200 to 1350<br>-200 to 0<br>0 to 1000<br>1000 to 1350 | 9<br>4.5<br>5.4 | 5<br>2.5<br>3 | 0.03%/°C<br>0.03%/°C<br>0.03%/°C                            |
| L                                   | -328 to 1652   | -200 to 900  | 5               | 2.75          | 0.03%/°C  |
| N (Nicrosil Nisil)                  | -328 to 2372<br>-328 to 32<br>32 to 2732                 | -200 to 1300<br>-200 to 0<br>0 to 1300                 | 2.7<br>2.7      | 1.5<br>1.5    | 0.05%/°C<br>0.04%/°C  |
| T                                   | -328 to 752<br>-328 to 32<br>32 to 752                   | -200 to 400<br>-200 to 0<br>0 to 400                   | 8<br>3.6        | 4.5<br>2      | 0.08%/°C<br>0.08%/°C  |
| W                                   | 1832 to 4172   | 1000 to 2300   | 5.9             | 3.25          | 0.15%/°C  |
| Nickel/Cobalt                       | -58 to 2372  | -50 to 1300  | 1.8             | 1             | 0.05%/°C  |
| Chromel/Copel                       | -58 to 1112  | -50 to 600   | 3.6             | 2             | 0.05%/°C  |
| Input Actuation<br>(RTD's)          | °F   | °C   | ± °F            | ± °C          |   |
| PT100 100 ohms<br>(To BS1904)       | -328 to 1202   | -200 to 650  | 3.1             | 1.7           | 0.05%/°C  |
| PT200<br>200 ohms                   | -328 to 356  | -200 to 180  | 7.2             | 4             | 0.05%/°C  |
| 100 ohm Nickel                      | -76 to 356   | -60 to 180   | 2.7             | 1.5           | 0.05%/°C  |
| 120 ohm Nickel                      | -112 to 464  | -80 to 240   | 3.2             | 1.75          | 0.05%/°C  |

Reference Temperature 20°C

Reference Humidity 65% RH ±15%

Reference junction Accuracy ±1.0degrees Centigrade

Reference Sample Rate: 2 Hz (500msec)

CJC Temperature Effect: ±0.05°C/°C

Long term stability: 0.2%/year

\* Does not includes reference junction calibration of ±2.0 ° C using the standard "ice bath" method of calibration. Factory accuracy can be improved by performing a field calibration.

\*\* Tolerance for these input types include that of the external dropping resistors

| Accuracy - Universal Input Card    |              |              |                 |      |   |
|------------------------------------|--------------|--------------|-----------------|------|---|
| Input Actuation<br>(Linear)        | Range        |              | Ref. Accuracy   |      | Temp. Stability<br>±  |
| Millivolts dc                      | -100 to 100  |              | +-0.1%          |      | 0.01%/°C  |
| Volts dc                           | -500 to 500  |              | +-0.1%          |      | 0.01%/°C  |
| Milliamps **                       | -1.0 to 1.0  |              | +-0.1%          |      | C   |
|                                    | -10 to 10    |              | +-0.1%          |      | 0.01%/°C  |
|                                    | 4 to 20      |              | +-0.2%          |      | C   |
|                                    | 0 to 20      |              | +-0.2%          |      | 0.01%/°C  |
|                                    |              |              |                 |      | 0.01%/°C  |
|                                    |              |              |                 |      | 0.01%/°C  |
| Input Actuation<br>(Thermocouples) | Range        |              | Ref. Accuracy * |      | Temp.<br>Stability ±<br>Degrees<br>Error Per 1<br>Degree ΔT |
|                                    | °F           | °C           | ± °F            | ± °C |   |
| B                                  | 212 to 500   | 100 to 260   | 30              | 16.7 | 0.13%/°C  |
|                                    | 500 to 1000  | 260 to 538   | 8               | 4.5  |   |
|                                    | 1000 to 3300 | 600 to 1820  | 4               | 2.3  |   |
| C (W <sub>5</sub> )                | 32 to 600    | 0 to 316     | 3.5             | 2    | 0.06%/°C  |
|                                    | 600 to 3600  | 316 to 1982  | 3               | 1.7  |   |
|                                    | 3600 to 4172 | 1982 to 2300 | 3.5             | 2    |   |
| E                                  | -328 to -202 | -200 to -130 | 25              | 14   | 0.06%/°C  |
|                                    | -202 to 1832 | -130 to 1000 | 2.3             | 1.3  |   |
| J                                  | 0 to 1600    | -18 to 871   | 1.2             | 0.6  | 0.03%/°C  |
| K                                  | 0 to 2400    | -18 to 1316  | 2               | 1.2  | 0.03%/°C  |
| L                                  | -328 to 1652 | -200 to 900  | 5               | 2.75 | 0.03%/°C  |
| N (Nicrosil Nisil)                 | 0 to 2372    | -18 to 1300  | 2               | 1.2  | 0.05%/°C  |
| R                                  | 0 to 500     | -18 to 260   | 5               | 2.8  | 0.1%/°C   |
|                                    | 500 to 3100  | 260 to 1704  | 2.2             | 1.2  | 0.1%/°C   |
| S                                  | 0 to 500     | -18 to 260   | 4.5             | 2.5  | 0.1%/°C   |
|                                    | 500 to 3100  | 260 to 1704  | 2.2             | 1.2  | 0.1%/°C   |
| T                                  | -300 to 700  | -184 to 371  | 2               | 1.2  | 0.08%/°C  |
| W_W <sub>26</sub>                  | 1832 to 4172 | 1000 to 2300 | 3.5             | 2    | 0.06%/°C  |
| Nickel/Cobalt                      | -58 to 2480  | -50 to 1360  | 2.4             | 1.4  | 0.05%/°C  |
| Chromel/Copel                      | -58 to 1110  | -50 to 600   | 3.2             | 1.8  | 0.05%/°C  |
| Input Actuation<br>(RTD's)         | °F           | °C           | ± °F            | ± °C |   |
| PT100 100 ohms<br>IEC α=0.00385    | -300 to 1200 | -184 to 649  | 1.4             | 0.8  | 0.05%/°C  |
| PT200<br>200 ohms                  | -300 to 1200 | -184 to 649  | 0.9             | 0.5  | 0.05%/°C  |
| 100 ohm Nickel                     | -76 to 356   | -60 to 180   | 4.5             | 2.5  | 0.05%/°C  |
| 120 ohm Nickel                     | -112 to 464  | -80 to 240   | 4.5             | 2.5  | 0.05%/°C  |
| Cu 10                              | -4 to 482    | -20 to 250   | 2.5             | 1.4  | 0.05%/°C  |
| Cu 53                              | 32 to 302    | 0 to 150     | 1.7             | 0.8  | 0.05%/°C  |

Reference Temperature 20°C Reference Sample Rate: 2 Hz (500msec)  
Reference Humidity 65% RH ±15% CJC Temperature Effect: ±0.05°C/°C  
Reference junction Accuracy ±1.0degrees Centigrade Long term stability: 0.2%/year

\* Does not include reference junction calibration of ±1.0 ° C using the standard "ice bath" method of calibration. Factory accuracy can be improved by performing a field calibration.

\*\* Tolerance for these input types include that of the external dropping resistors



| Logging                            |   |
|------------------------------------|---|
| Logging Method                     | Sample, Average, Min/Max  |
| Logging Types                      | Continuous, Events, Fuzzy   |
| Logging Rates                      | From 20 msec. to 4 days per pen   |
| Fuzzy Logging                      | A secure data storage technique which typically delivers data compression ratio of 100:1 or more; self teaching, storing the data at a variable rate to match the process   |
| Physical Parameters                |   |
| Enclosure                          | Case: Mild steel, zinc plated and passivated<br>Bezel: Aluminium, black polyester powder coat<br>Splash proof cover, designed to IP65/Nema 4  |
| Mounting (Panel)                   | Flush panel mounting on a vertical plane.<br>Mounting adjustable for panel thickness of 2 mm to 100 mm<br>Adapter kits available for covering existing panel cutouts.<br>± 15° from the horizontal, for 1.44MB Floppy ± 25° from the horizontal   |
| Dimensions                         | W: 300 mm, H: 300 mm, D: 285 mm (Depth includes 40 mm recommended clearance for power cable and signal connectors as supplied). Cutout 280 x 280mm/11.02 x 11.02"   |
| Weight                             | 10 Kg   |
| Color                              | Bezel: Black  |
| Wiring Connections                 | IEC Power Plug. Removable terminal strip for input and alarm connections  |
| Options                            |   |
| Alarm Outputs (optional)           | An alarm signal is outputted from the rear panel, via a 24-way connector, as a relay contact signal. Programmable alarm set points can be configured to activate up to 32 relay outputs. Alarm types comprise of high and low rate of change. Programming of alarm parameters is done using Trend Manger Software.<br><br><i>Update rate:</i> 200 ms for all alarms<br><i>Number/Type:</i> <ul style="list-style-type: none"> <li>• 4 or 8 relay contacts NO/NC, 3 A, 240 Vac/dc (non-inductive, internally suppressed)</li> <li>• 8 I/O or 16 I/O - 1 A 24 Vdc (non-inductive, internally suppressed)</li> </ul> <i>Activation:</i> Fully programmable internal alarm levels or rates of change. Freely assignable to any relay or discrete output |
| Digital I/O (optional)             | 2, 8 or 16 channel digital input/output cards where all channels may be used as digital inputs. A digital input is provided by a volt free contact between the normally open (NO) and a common (C) terminal of an output relay, if not used as alarm outputs.   |
| Custom Screens & Mimics (optional) | Provides the capability in the recorder to accept custom screen designs and bit maps from the Screen Designer software. Depending on the size of the screen designs, up to 10 screens can be loaded into the recorder memory.   |
| Event Marker (optional)            | User defined process events are recorded and can be set to cause particular recorder actions. Events can consist of recording start/stop, digital inputs, user key press, totalizing actions, timers, barcode, etc. Once an event has been caused it can produce a definable set of effects on the recorder which can include, mark on chart, relay outputs, recording control, counters, totalizing actions, triggering other event. Each event marker can be recorded to disk for analysis using the TrendManager Software Suite. Event Markers required when using the RS232 ASCII port to input bar code messages.  |
| Transmitter Power (optional)       | 1 Amp @ 24 Vdc ± 3 Vdc.   |
| Communications (optional)          | RS485 supporting Honeywell Trendbus Protocol. Trendbus is used in conjunction with TrendServer Pro<br><br>Ethernet 10 Base –T connector supporting Real time Trendbus, Modbus, FTP protocol, Internet, e-mail<br><br>Ethernet 10 Base –T connector/RS485 Trendbus/RS232 ASCII – Ethernet support Real time Trendbus, Modbus, FTP protocol, Internet, e-mail, RS485 supports Trendbus protocol, RS232 supports bar code input (Event Marker option required to enter bar code messages)<br><br>RS485 (4-wire) supporting Modbus RTU protocol.  |



|  |  |                                   |  |                                     |
|--|--|-----------------------------------|--|-------------------------------------|
| <b>Analog Outputs (Re-transmission) (optional)</b> | 2, 4, 6 or 8 re-transmission outputs available; each output is driven by a pen. Analog inputs, totaled values or any mathematical result can be re-transmitted<br><i>Update Rate:</i> 200 msec all channels<br><i>Type:</i> 4 mA to 20 mA, 0 mA to 24 mA<br><i>Resolution:</i> 0.0015%<br><i>Accuracy:</i> ±0.25 %<br><i>Maximum Load Resistance:</i> 500<br><i>Isolation:</i> 300 Vdc |                                   |  |                                     |
| <b>Totalizers/Fo (optional)</b>                    | One totalizer per input. Totalizer value is assigned to a pen for data storage. Totalization values are ten digits plus exponent. Totalizer includes Fo Sterilization Calculation  |                                   |  |                                     |
| <b>Math Algorithms (Standard Math)</b>             | All analog input channels have a maths expression block. This is a fully user programmable 250 character free form math expression for each pen. Maths calculations available on all pens, with 32 extra pens . Standard Math includes Add, Subtract, Multiply, and Divide.  |                                   |  |                                     |
|  | <b>Math Expressions</b>  |                                   |  |                                     |
| <b>Math Algorithms (Optional)</b>                  | Square   | Square root                       | Modulus  | Log                                 |
|  | LN (natural log)   | Lowest                            | Highest  | Round                               |
|  | Reciprocal   | Absolute                          | Totalized  | Over                                |
|  | Under  | Inside                            | Outside  | SIN                                 |
|  | COS  | TAN                               | °F to °C   | °C to °F                            |
|  | Rolling Average  | Delay                             | Index Analog   | Index Digitals                      |
|  | Index Relay Output   | Evaluate                          | Exponential  | Floor                               |
|  | Ceiling  | Cold Junction Comp.               | Counter Alarms   | Counter Digital                     |
|  | Counter Events   | Counter User                      | Root   | Power                               |
|  | ACOS   | ASIN                              | ATAN   | SINH                                |
|  | COSH   | TANH                              | ASINH  | ACOSH                               |
|  | ATANH  | AL (Alarm Status)                 |  |                                     |
| <b>Extended Security (Optional)</b>                | Provides full support for 21 CFR Part 11. Includes features for entry of unique User ID's and associated passwords, timeout of password entry (1 to 10 min.), password expiration (1 to 190 days), up to 20 users, password re-entry lock out for incorrect entry of password more than 3 times, no re-use of passwords (programmable 4 to 12 times), tracability by user name         |                                   |  |                                     |
| <b>Agency Approval</b>                             | CE Mark Standard, CSA (Optional) Certificate Number L101284, UL (Optional) File # 201698   |                                   |  |                                     |
| <b>Miscellaneous</b>                               | Customer ID Tagging (3 lines of up to 22 characters each line)   |                                   |  |                                     |
| <b>Environmental and Operating Conditions</b>      |  |                                   |  |                                     |
| <b>Parameter</b>                                   | <b>Reference</b>   | <b>Rated</b>                      | <b>Extreme</b>   | <b>Transport and storage</b>        |
| <b>Ambient Temperature</b>                         | 67 °F to 77 °F<br>19 °C to 25 °C   | 58 °F to 104 °F<br>15 °C to 40 °C | 32 °F to 122 °F<br>0 °C to 50 °C<br>0°C to 40°C (Floppy/ZIP) | -14 °F to 140 °F<br>-10 °C to 60 °C |
| <b>Relative Humidity (%RH)</b>                     | 50 to 65*  | 10 to 90*                         | 5 to 90*   | 5 to 95*                            |
| <b>Vibration</b>                                   |  |                                   |  |                                     |
| Frequency (Hz)                                     | 0  | 0 to 70                           | 0 to 100   | 0 to 100                            |
| Acceleration (g)                                   | 0  | 0.1                               | 0.2  | 0.5                                 |
| <b>Mechanical Shock</b>                            |  |                                   |  |                                     |
| Acceleration (g)                                   | 0  | 1                                 | 5  | 20                                  |
| Duration (ms)                                      | 0  | 30                                | 30   | 30                                  |
| <b>Mounting Position from Vertical</b>             |  |                                   |  |                                     |
| Tilted Forward                                     | 5°   | 20°                               | 25°  | Any                                 |
| Tilted Backward                                    | 5°   | 20°                               | 25°  | Any                                 |
| Tilted to Side (±)                                 | 5°   | 20°                               | 25°  | Any                                 |
| <b>Power Requirements</b>                          |  |                                   |  |                                     |
| Voltage (VRMS)                                     | 119 to 121   | 90 to 250                         | 90 to 250  | N/A                                 |
| Frequency (Hz)                                     | 49.8 to 60.2   | 47 to 440                         | 47 to 440  | N/A                                 |
| <b>Power Consumption</b>                           | 50 VA maximum  |                                   |  |                                     |
| <b>Warm Up</b>                                     | 30 minutes minimum   |                                   |  |                                     |

\* The maximum rating only applies up to 104 $^{\circ}\text{F}$  (40 $^{\circ}\text{C}$ ). For higher temperatures, the RH specification is de-rated to maintain constant moisture content.

### Application Software – TrendManager Pro V5 Software Suite

**TrendViewer** software is available at no charge when ordering any recorder; it allows the user to view, graph and print data.

**TrendManager Pro** is a stand-alone package that delivers to the user total recorder configuration, simulates the recorder's performance on the PC, and archives, graphs, prints and exports data. Full data graphing, archiving and export tools are included.

Minimum System requirements for TrendViewer and TrendManager Pro:

- 200 MHz Pentium processor or higher
- 3.5" Floppy disk drive
- CD-ROM drive
- Monitor recommended screen resolution 800 x 600 minimum requirement, high color
- Windows 98SE, 2000, ME, XP, NT ver. 4.0 with Service pack 6, onwards
- 32 Mbyte of RAM (64 Mbyte recommended)
- 10 Mbyte free hard disk space
- A mouse

**TrendServer Pro** is a fully network aware package, which allows data viewing, archiving and communications. The recorder uses a

RS485 network or can access them directly with the recorder's own Ethernet TCP/IP port. Standard kit includes data archive tools plus E-mail, graph, print import and export data facilities.

Minimum System requirements for TrendServer:

- 450 MHz Pentium processor or higher
- CD-ROM drive
- Monitor recommended screen resolution 1024 x 768 minimum requirement, high color
- 2 Gbyte Hard-drive free disk space
- Windows 98SE, 2000, ME, XP, NT ver. 4.0 with Service pack 6, onwards
- 64 Mbyte of RAM
- TCP IP installed
- A mouse

**TrendServer Pro with Comms Server** provides the same functions as the TrendServer Pro but includes the added function of an integrated Comms Server to allow easy interfacing to third party HMI software packages that support an OPC Client. This provides a real-time interface between servers and clients.

**Screen Designer** enables the customers to design unique display layouts for transfer to the recorder's screen. Screen layouts can be created using any combination of indicators such as trending Charts, Digital Panel Meters (DPM), Bar graphs, Bitmaps, Digital pictures and Plant diagrams. Flexibility allows each type of indicator to have elements of its appearance changed to create an individual presentation.

The **Screen Designer** software design package is compatible with **Minitrend V5** and **Multitrend Plus V5** recorders allowing layouts to be transferred on to single or multiple recorders. This contributes to continuity and standardization of process data.

Minimum System requirements for Screen Designer:

- 200 MHz Pentium processor or higher
- 3.5" Floppy disk drive
- CD-ROM drive
- Windows 98SE, 2000, ME, XP, NT ver. 4.0 with Service pack 6, onwards
- 32 Mbytes of RAM (64 Mbytes recommended)
- 16 bit color graphics (24 bit recommended)
- 10 Mbytes free hard disk space
- A mouse

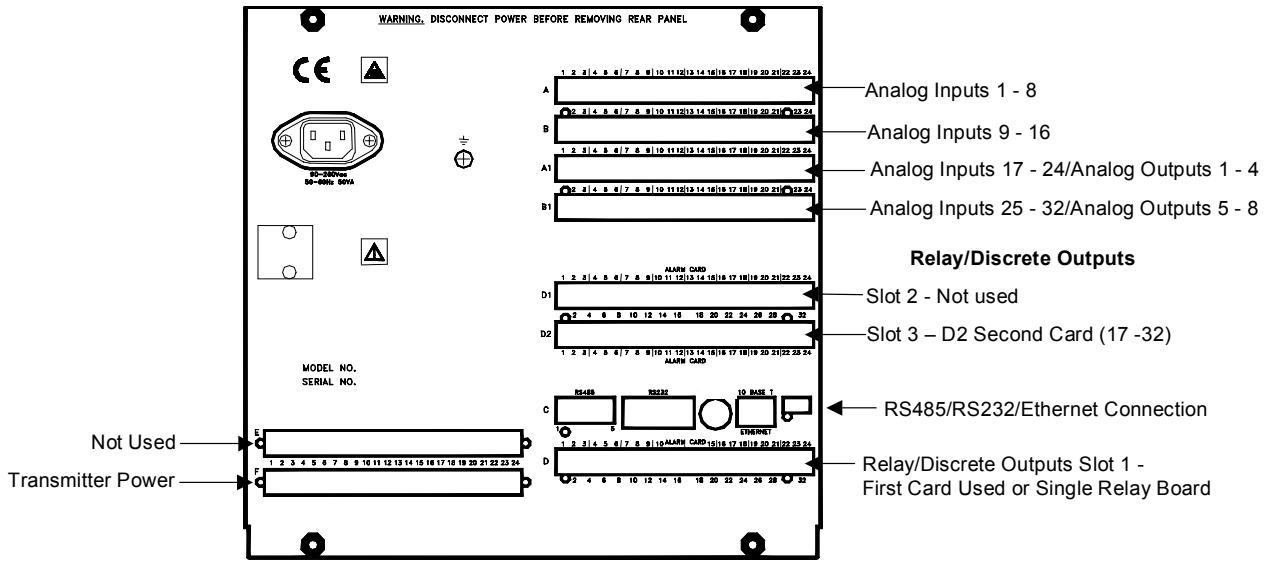
### Trend Manager Suite Comparison

| Features   | Trend Viewer    | Trend Manager | Trend Server |
|--|-----------------|---------------|--------------|
| Full Configuration of any recorder on PC                   |                 | *             | *            |
| Import data from disk                                      | *               | *             | *            |
| Print all graph data and recorder configurations           | *               | *             | *            |
| Archive data on secure databases                           | graph data only | *             | *            |
| Graph all data, including ideal vs actual batch comparison |                 | *             | *            |
| E-mail recorder configurations and data on WWW             |                 | *             | *            |
| Upgrade available over WWW                                 | *               | *             | *            |
| Export using CSV format                                    |                 | *             | *            |
| Export using OPC links                                     |                 |               | *            |
| Communicate with up to 256 recorders on RS485              |                 |               | *            |
| Communicate with recorders using Ethernet TCP/IP           |                 |               | *            |
| Distribute recorder data over plant-wide LAN               |                 |               | *            |
| FTP/IP and Real time Ethernet connection                   |                 |               | *            |
| Fuzzy logging  |                 | *             | *            |
| Events System  |                 | *             | *            |
| Password protection  |                 |               | *            |
| Web browse a recorder                                      |                 |               | *            |
| Send setup to recorder via Ethernet                        |                 |               | *            |
| Audit trail manager  |                 |               | *            |

**Model Number Interpretation** – For complete ordering information see Model Selection Guide 43-TV-16-02

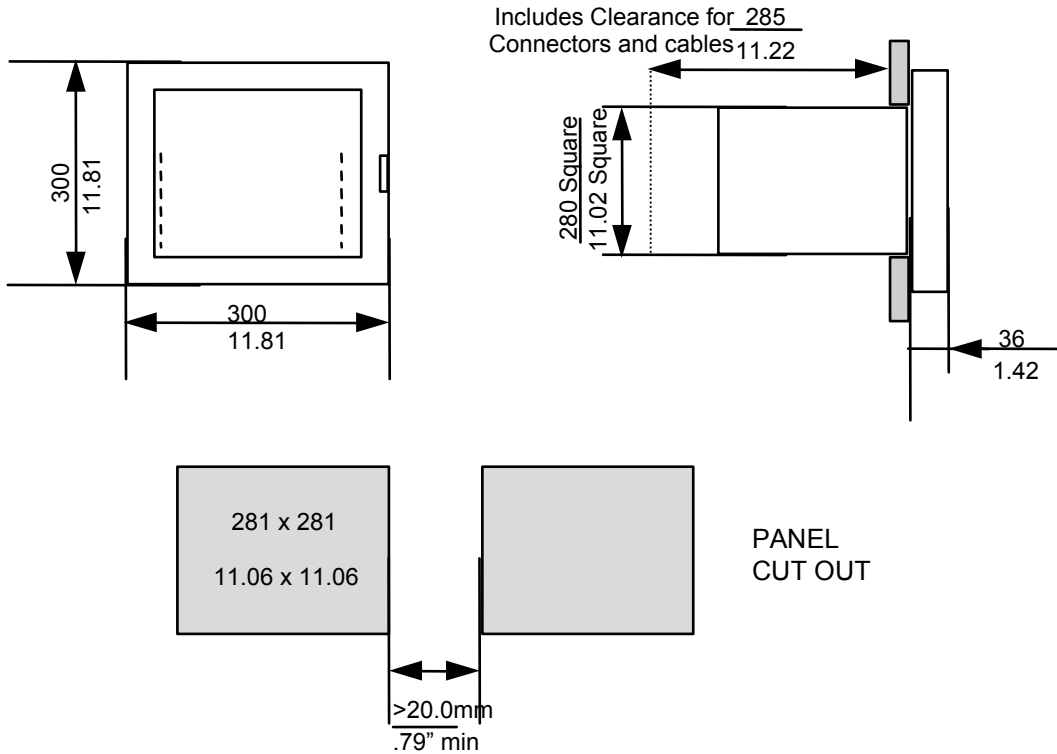
T V M P - - - - - - - - - - 0 0

|  |  |   |
|--|--|---|
| <b>Key number</b><br>Multitrend Plus V5 Electronic Data Recorder   |  | <b>Table IV - Communications</b><br><u>Communication Protocol</u><br>None 0 __<br>RS485 (Real time Trendbus) T __<br>Ethernet (Real time Trendbus, Web, FTP, E-mail) E __<br>Ethernet/RS232/485 (all options - A __<br>Real time Trendbus, Web, RS232, Barcode)<br>RS485 Modbus Protocol M __<br><u>Instrument Power</u><br>90 - 240 Vac _ 0 _<br>24 Vdc _ 2 _<br><u>Transmitter Power</u><br>None __ 0<br>Transmitter Power __ P   |
| <b>Table I - Analog Inputs</b><br><u>Number of Inputs</u><br>8 8 _<br>12 A _<br>16 B _<br>24 C _<br>32 E _<br><u>Input Type</u><br>Universal (T/C, RTD, mV, mA) _ 0<br>Fast Scanning _ F<br>Fast Scanning/Universal _ M  |  | <b>Table V - Data Storage/Memory Card</b><br><u>Data Storage</u><br>None 0 __<br>1.44 MB floppy F __<br>100 MB ZIP Z __<br><u>Memory Card Interface</u><br>Memory Card interface _ 1 _<br><u>No Selection</u><br>None __ 0  |
| <b>Table II - Discrete Inputs/Outputs &amp; Analog Outputs</b><br><u>Discrete Inputs/Outputs</u><br>None 0 -<br>4 Relay Outputs 4 -<br>8 Relay Outputs/2 Digital Inputs 8 _<br>8 Configurable Digital Inputs/ Digital Outputs A _<br>16 Configurable Discrete Inputs/Discrete Outputs B -<br>4 Relay Outputs and 8 I/O C _<br>4 Relay Outputs and 16 I/O E _<br>8 Relay Outputs/2 Digital Inputs and 4 Relay Out F _<br>8 Relay/2 Digital Inputs and 8 Relay/2 Digital Input G _<br>8 Relay Outputs/2 Digital Inputs and 8 I/O H _<br>8 Relay Outputs/2 Digital Inputs and 16 I/O J _<br>16 I/O and 8 I/O K _<br>16 I/O and 16 I/O L _<br><u>Analog Outputs Type</u><br>None _ 0<br>2 Analog Outputs (not available with 32 AI) _ 2<br>4 Analog Outputs (not available with 32 AI) _ 4<br>6 Analog Outputs (not available with 24 or 32 AI) _ 6<br>8 Analog Outputs (not available with 24 or 32 AI) _ 8 |  | <b>Table VI - Options</b><br><u>Case/Mounting</u><br>Standard Panel Mounting 0 _ _ _ _<br>NEMA4/IP65 cover C _ _ _ _<br>Portable Case P _ _ _ _<br><u>Documentation</u><br>English _ U _ _ _<br>French _ F _ _ _<br>German _ G _ _ _<br>Italian _ I _ _ _<br>Spanish _ S _ _ _<br>Product Documentation on CD _ 0 _ _ _<br><u>Tagging</u><br>None _ _ 0 _ _<br>Linen Tag _ _ L _ _<br>Stainless Steel Tag _ _ S _ _<br><u>Approvals</u><br>None _ _ _ 0 _<br>CSA Approval _ _ _ C _<br>UL Listed _ _ _ U _<br>UL Listed & CSA Approval _ _ _ B _<br><u>Certifications</u><br>None _ _ _ _ 0 _<br>Certificate of Conformance (F3391) _ _ _ _ B _<br>Custom Calibration Test Report _ _ _ _ C _<br>Cert. Of Conformance & Calib. Test Report _ _ _ _ E _<br>Validation Manual _ _ _ _ V _<br>Validation Manual c/w Cert on Conf/Calib Test _ _ _ _ W _<br><u>Software</u><br>None _ _ _ _ _ 0<br>TrendManager Pro _ _ _ _ _ P<br>TrendServer Pro (Single User License) _ _ _ _ _ S<br>TrendServer Pro w/OPC (Single User License) _ _ _ _ _ T |
| <b>Table III - Firmware Options</b><br><u>Firmware</u><br>None 0 __<br>Math +Totalizers +Event Markers +16 Extra Pens A __<br>Math +Totalizers +Event Markers +32 Extra Pens P __<br><u>Screen Options</u><br>None _ 0 _<br>Mimics and Custom Screens _ M _<br>Screen Designer w/Mimics and Custom Screens _ S _<br><u>Security</u><br>Standard _ _ 0<br>Extended System Security _ _ S  |  |   |



90 – 250 Vac Rear Panel AC power is connected via the standard configuration IEC chassis plug on the rear panel

## Multitrend Plus Recorder Back panel Layout



## Multitrend Plus Recorder Dimension Layout

## WARRANTY/REMEDY

Honeywell warrants goods of its manufacture as being free of defective materials and faulty workmanship. Contact your local sales office for warranty information. If warranted goods are returned to Honeywell during the period of coverage, Honeywell will repair or replace without charge those items it finds defective. **The foregoing is Buyer's sole remedy and is in lieu of all other warranties, express or implied, including those of merchantability and fitness for a particular purpose.**

Specifications may change without notice. The information we supply is believed to be accurate and reliable as of this printing. However, we assume no responsibility for its use.

While we provide application assistance personally, through our literature and the Honeywell web site, it is up to the customer to determine the suitability of the product in the application.

### ARGENTINA

HONEYWELL S.A.I.C.  
BELGRANO 1156  
BUENOS AIRES  
ARGENTINA  
Tel. : 54 1 383 9290

### ASIA PACIFIC

HONEYWELL ASIA  
PACIFIC Inc.  
Room 3213-3225  
Sun Kung Kai Centre  
N° 30 Harbour Road  
WANCHAI  
HONG KONG  
Tel. : 852 829 82 98

### AUSTRALIA

HONEYWELL LIMITED  
5 Thomas Holt Drive  
North Ryde Sydney  
NSW AUSTRALIA 2113  
Tel. : 61 2 353 7000

### AUSTRIA

HONEYWELL AUSTRIA  
G.m.b.H.  
Handelskai 388  
A1020 VIENNA  
AUSTRIA  
Tel. : 43 1 727 800

### BELGIUM

HONEYWELL S.A.  
3 Avenue de Bourget  
B-1140 BRUSSELS  
BELGIUM  
Tel. : 32 2 728 27 11

### BRAZIL

HONEYWELL DO BRAZIL  
AND CIA  
Rua Jose Alves Da  
Chunha  
Lima 172  
BUTANTA  
05360.050 SAO PAULO  
SP  
BRAZIL  
Tel. : 55 11 819 3755

### BULGARIA

HONEYWELL EOOD  
14, Iskarsko Chausse  
POB 79  
BG- 1592 Sofia  
BULGARIA  
Tel. : 359-791512/ 794027/  
792198

### CANADA

HONEYWELL  
The Honeywell Centre  
155 Gordon Baker Road  
Toronto, Ontario M2H 3N7  
Tel. : 416-502-4666

### CZECH

REPUBLIC  
HONEYWELL, Spol.s.r.o.  
Budejovicka 1  
140 21 Prague 4  
Czech Republic  
Tel. : 42 2 6112 3434

### DENMARK

HONEYWELL A/S  
Automatikvej 1  
DK 2860 Soeborg  
DENMARK  
Tel. : 45 39 55 56 58

### FINLAND

HONEYWELL OY  
Ruukintie 8  
FIN-02320 ESPOO 32  
FINLAND  
Tel. : 358 0 3480101

### FRANCE

HONEYWELL S.A.  
Bâtiment « le Mercury »  
Parc Technologique de St  
Aubin  
Route de l'Orme  
(CD 128)  
91190 SAINT-AUBIN  
FRANCE  
Tel. from France:  
01 60 19 80 00  
From other countries:  
33 1 60 19 80 00

### GERMANY

HONEYWELL AG  
Kaiserleistrasse 39  
D-63067 OFFENBACH  
GERMANY  
Tel. : 49 69 80 64 299

### HUNGARY

HONEYWELL Kft  
Gogol u 13  
H-1133 BUDAPEST  
HUNGARY  
Tel. : 36 1 451 43 00

### ICELAND

HONEYWELL  
Hataekni .hf  
Armuli 26  
PO Box 8336  
128 reykjavik  
Iceland

### ITALY

HONEYWELL S.p.A.  
Via P. Gobetti, 2/b  
20063 Cernusco Sul  
Naviglio  
ITALY  
Tel. : 39 02 92146 1

### MEXICO

HONEYWELL S.A. DE CV  
AV. CONSTITUYENTES  
900  
COL. LOMAS ALTAS  
11950 MEXICO CITY  
MEXICO  
Tel. : 52 5 259 1966

### THE

NETHERLANDS  
HONEYWELL BV  
Laaderhoogweg 18  
1101 EA AMSTERDAM  
ZO  
THE NETHERLANDS  
Tel. : 31 20 56 56 911

### NORWAY

HONEYWELL A/S  
Askerveien 61  
PO Box 263  
N-1371 ASKER  
NORWAY  
Tel. : 47 66 76 20 00

### POLAND

HONEYWELL Sp.z.o.o  
Ul Domainewksa 41  
02-672 WARSAW  
POLAND  
Tel. : 48 22 606 09 00

### PORTUGAL

HONEYWELL  
PORTUGAL LDA  
Edificio Suecia II  
Av. do Forte nr 3 - Piso 3  
2795 CARNAXIDE  
PORTUGAL  
Tel. : 351 1 424 50 00

### REPUBLICOF

IRELAND  
HONEYWELL  
Unit 1  
Robinhood Business Park  
Robinhood Road  
DUBLIN 22  
Republic of Ireland  
Tel. : 353 1 4565944

### REPUBLICOF

SINGAPORE  
HONEYWELL PTE LTD  
BLOCK 750E CHAI CHEE  
ROAD  
06-01 CHAI CHEE IND.  
PARK  
1646 SINGAPORE  
REP. OF SINGAPORE  
Tel. : 65 2490 100

### REPUBLIC OF SOUTH

AFRICA  
HONEYWELL  
Southern Africa  
PO BOX 138  
Milnerton 7435  
REPUBLIC OF SOUTH  
AFRICA  
Tel. : 27 11 805 12 01  
Fax: 27 11 805 1504  
Mobile: 27 82 807 7760

### ROMANIA

HONEYWELL Office  
Bucharest  
147 Aurel Vlaicu Str.,  
Sc.Z.,  
Apt 61/62  
R-72921 Bucharest  
ROMANIA  
Tel40-1 211 00 76/  
211 79

### RUSSIA

HONEYWELL INC  
4 th Floor Administrative  
Building of AO "Luzhniki"  
Management  
24 Luzhniki  
119048 Moscow  
RUSSIA  
Tel. : 7 095 796 98 00/01

### SLOVAKIA

HONEYWELL Ltd  
Mlynske nivy 73  
PO Box 75  
820 07 BRATISLAVA 27  
SLOVAKIA  
Tel. : 421 7 52 47 400/ 425

### SPAIN

HONEYWELL S.A  
Factory  
Josefa Valcarcel, 24  
28027 MADRID  
SPAIN  
Tel. : 34 91 31 3 61 00

### SWEDEN

HONEYWELL A.B.  
S-127 86 Skarholmen  
STOCKHOLM  
SWEDEN  
Tel. : 46 8 775 55 00

### SWITZERLAND

HONEYWELL A.G.  
Hertistrasse 2  
8304 WALLISELLEN  
SWITZERLAND  
Tel. : 41 1 831 02 71

### TURKEY

HONEYWELL  
Otomasyon ve Kontrol  
Sistemlen San ve Tic A.S.  
(Honeywell Turkey A.S.)  
Cayiriyolu Sok. No 7  
Ucgen Plaza, Kat 5-6-7  
Icerenkoy 81120 Istanbul  
TURKEY  
Tel. : 90-216 575 66 00

### UNITED KINGDOM

HONEYWELL  
Newhouse Industrial Est  
Motherwell, Scotland  
ML1 5SB  
UNITED KINGDOM  
Tel. : 44 (0)1698 481481  
Fax: 44(0)1698 481276

### U.S.A.

HONEYWELL INC.  
1100 VIRGINIA DRIVE  
FT. WASHINGTON  
PA 19034-3260 ,U.S.A.  
Tel. : 1-800-343-0228

### VENEZUELA

HONEYWELL CA  
APARTADO 61314  
1060 CARACAS  
VENEZUELA  
Tel. : 58 2 239 0211

**Honeywell**

**Industrial Measurement and Control**  
Honeywell  
1100 Virginia Drive  
Fort Washington, PA 19034